

ACTS OF ADVENTURE

VAN BUILD PARTS LIST

Updated June 2022

"VANOLIN THE RAM" - 2017 RAM PROMASTER 2500, 159" WB

PAGE 2 - PRE-BUILD + ELECTRICAL

Vanolin has a total of **800 watts** of solar panels that feed its **700 amp hour AGM battery bank**. Combined with a battery isolator for cloudy days, this provides enough power for 2 people to live and work **full-time off-the-grid with no propane**. We bought most of our electrical and solar parts from [ContinuousResources.com](https://www.continuousresources.com). Use code "ADVENTURE5" for 5-10% off! Also, [download our Electrical Wiring Diagram](#).

PAGE 3 - INSULATION + WET BATH

[Havelock sheep's wool insulation](#) helps keep our small space warm and non-toxic. The wet bath consists of a **shower with hot water** and a **composting toilet**. Our plumbing system has a total capacity of 27 gallons of **filtered water**. [Read our wet bath build guide here](#).



PAGE 4 - VAN KITCHEN

We fit as much as possible into our tiny kitchen area. The **12v fridge** is large and affordable, and the **dual radiant cooktop** uses less energy than an induction cooktop. With some ingenuity, we created a small **farmhouse sink**. See how we make amazing van latte's in the "**kitchen essentials**" section!

PAGES 5 & 6 - EVERYTHING ELSE

This section includes items and parts used on the van's exterior (**windows and roof rack**), overhead cabinets, the **Espar gas heater**, and super **helpful essentials** inside the van and in the garage area. Click here to read our [solar panel roof rack build guide](#).

PAGES 7 & 8 - LAYOUT DIAGRAMS

PAGES 9 - 11 - TOP 5 CHANGES

DISCLAIMER

The majority of the product links below are "affiliate links." This means we make a small commission if you make a purchase after clicking one of our links, at no cost to you. We have truly used every single item listed below in our van build.

PRE-BUILD PARTS LIST

- TOOLS
 - Jigsaw w/ blades
 - Circular Saw
 - Extra Blades x 2
 - Compound Miter Saw w/ blade
 - Table Saw - The #1 tool we *wish* we had!
 - Rivnut Setting Tool
 - M5 Rivnuts x 100
 - Large Hex Rivnuts x 50 (for rear bed supports)
 - Call DB Roberts @ 800-800-9991, Part # AES37H115ZYZR
 - Sheet Metal Shears (for cutting FRP board in the wet bath)

SOLAR / ELECTRICAL PARTS LIST

Use code ADVENTURE5 for 5-10% off at ContinuousResources.com

- HighTec 200w 12v Solar Panels x 4 (800 watts total)
 - 8awg Solar Wire
 - Y-Branch Connectors
 - MC4 Inline Fuses - 2x 15 amp, 1x 30 amp
 - Waterproof Cable Glands
- VMaxTanks 350ah 12v AGM batteries x 2 (700ah total)
 - 350ah battery no longer available. New version is 310ah.
 - 4/0 Battery Cable
- Renogy Battery Monitor
- EPEVER 60A MPPT Charge Controller
- WZRELB 3000w Inverter - with remote switch and hardwire port
- Battery Doctor 150A Battery Isolator
 - We recommend a B2B Charger if you have the money
- Blue Sea Systems 600A 8-Stud Busbar x 2
- Blue Sea Systems 12v Fuse Block
- Marine Grade 12v Duplex Wire, 12 gauge, 100 feet
- Marine Grade 12v Duplex Wire, 14 gauge, 100 feet
 - Use a wire size chart to determine the size for your needs

INSULATION PARTS LIST

- Havelock Wool Insulation
 - 2 batts of R7 (2" thickness) + 1 batt of R13 (3.5" thickness)
- 3M Thinsulate - One 10' x 60" roll
- Reflectix - One 10' x 48" roll
- Front Window Heatshield
- Side Windows Heatshield
- Sliding Door Window Insulated Cover

SHOWER / WET BATH PARTS LIST

- Nature's Head Composting Toilet
 - Rubber Grommet - for toilet vent tube through shower wall
- FRP Board - Smooth white available at building supply stores
 - FRP Adhesive
- Bosch 4-gallon Hot Water Heater
- 24x36" Shower Pan
 - Shallow 90-degree Drain
- Stoett Nautilus Retractable Shower Door
- Black Shower Faucet
- Black Shower Arm
- Black Shower Head
- Adhesive Soap Dispenser
- **PLUMBING:**
 - Valterra 27-gal Fresh Water Tank
 - 3/8" threaded to 1/2" hose adapter x 2
 - 3/8" drain
 - Shurflo 12v Water Pump
 - Shurflo Accumulator Tank
 - Shurflo Strainer
 - Shurflo Silencer Kit
 - APEC Water Filtration System
 - 1/2" PEX - Crimp Tool & Crimp Fittings



KITCHEN PARTS LIST

- Truckfridge TF-130
- Ramblewood 110v Dual Burner Radiant Cooktop
- Vigo Bavaro Matte White Stone Sink
- Matte Black Faucet
- Matte Black Soap Dispenser
- Matte Black Water Filter Faucet
- Butcher Block Countertop
 - Stained/Sealed with Pure Tung Oil + Citrus Solvent

VAN KITCHEN ESSENTIALS



- Electric Hot Water Kettle
- Moka Pot for Coffee
- Electric Milk Frother
- Nutribullet Pro
- Insulated Stainless Steel Mugs
- Banana Hammock
- Ceramic Knife Set w/ Sheaths
- "Plastic" Biodegradable Wheat Bowls
 - and Wheat Plates
- Subway Tile Kitchen Backsplash

EVERYTHING ELSE

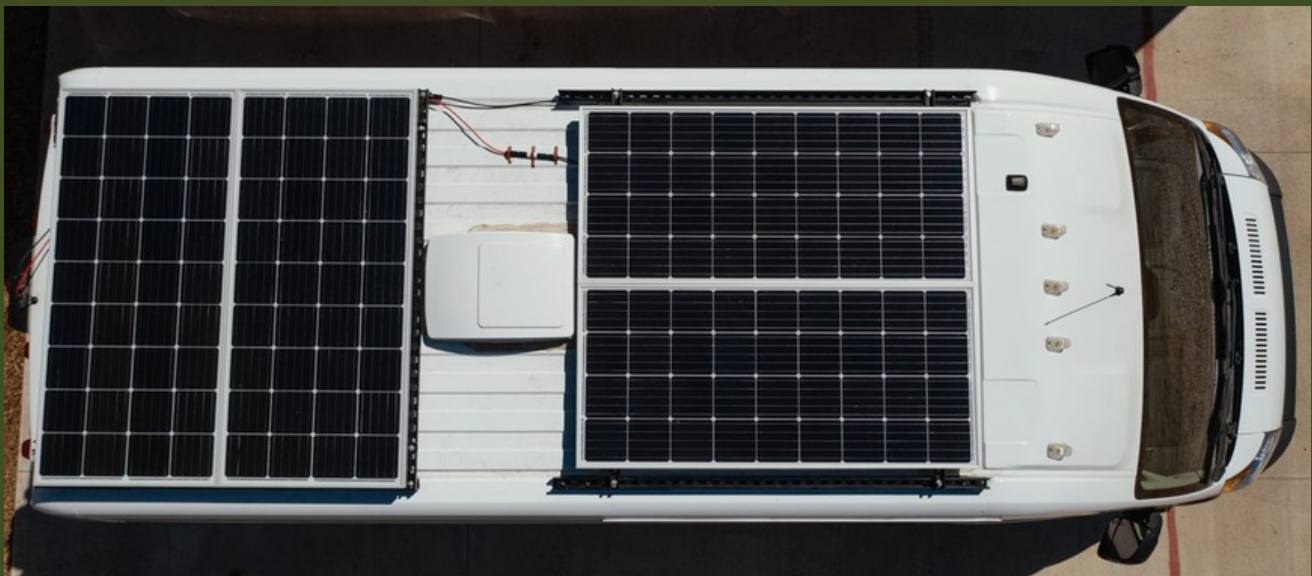
- [Espar B4L 12v Gas Parking Heater](#) - We don't recommend Heatso.com
- **OVERHEAD CABINETS:**
 - [Kreg Jig](#)
 - [Cabinet Hinge Drill Bit](#)
 - [Cabinet Hinges](#)
 - [Black Cabinet Pulls](#)
 - [Gas Struts](#) - these actually keep the overhead cabinets closed too
 - [RV Cabinet Door Latches](#) - only used on lower cabinets
- **WORK STATIONS:**
 - [Seatback Laptop + Workspace Organizer](#)
 - [Custom Foam Cushions](#) - We also ordered our mattress from here
 - [Passenger's Seat Swivel Base](#)
 - [Lagun Table Mounts x 2](#)
 - [Safe](#)
- **INTERIOR ESSENTIALS:**
 - [Colorful Runner Rug](#)
 - [Diamond Mirror](#)
 - [Gooseneck Reading Light](#)
 - [Maple Laminate Flooring](#)
 - Our flooring is discontinued
 - [All-Weather Cab Floor Mat](#)
 - [LED Ceiling Lights](#)
 - [LED 12v Dual Zone Dimmer](#)
- **GARAGE:**
 - [Bike Mounts x 2](#)
 - [Traction Boards](#)
 - [Shoe Holder](#)
 - [Expandable Water Hose](#)
 - [Telescoping Ladder](#)
 - [12v Air Compressor](#)
 - [Inflatable Stand Up Paddle Boards x 2](#)



➤

- **VAN EXTERIOR:**

- Rear Sumo Springs
- Front Sumo Springs
- Vantech Roof Mounts
- Unistrut for Roof Rack
 - Unistrut Cone Nuts (buy appropriate bolt thread size)
- CR Laurence Sliding Door T-Vent Window for Ram Promaster
- CR Laurence AW1033 Awning Bunk Windows
- MaxxAir MaxxFan Deluxe
 - Dicor Self-Leveling Lap Sealant
 - Dicor Butyl Tape



Thanks for downloading our Van Parts List PDF. Save this to your computer for easy access during your van build. And don't miss our **layout dimensions & diagrams** on the next page.

After living in our van for over 3 years, we've added the **top 5 things we would change to our layout** on Page 9 below!

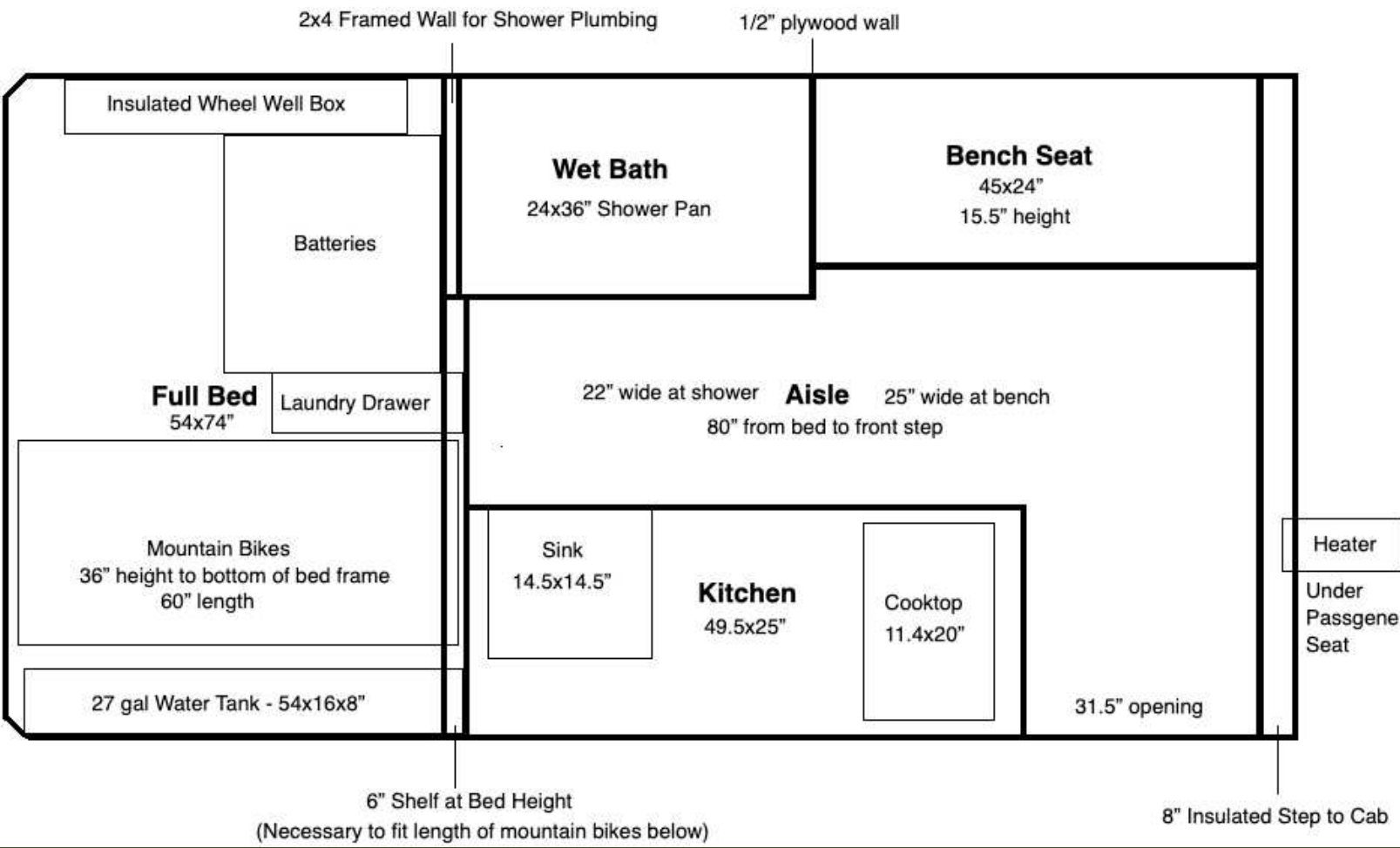
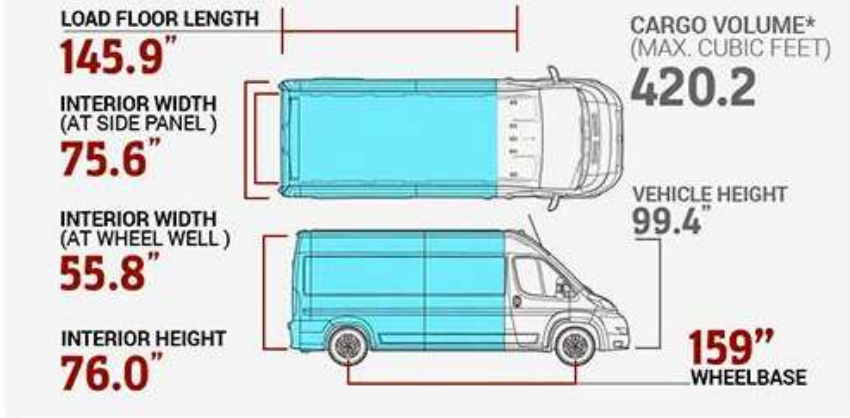
Has this PDF been helpful to you? Say thanks by following along with our travels and adventures! Here's how you can stay in touch:

[View all of our Vanlife Resources on our Website](#)

[Watch our Van Tour Video and subscribe on YouTube](#)

[Follow @ActsOfAdventure on Instagram](#)

LAYOUT DIAGRAMS & DIMENSIONS



LAYOUT DIAGRAMS & DIMENSIONS

Overhead Cabinets

Made from 1/2" birch plywood, a 1x2 face frame, and 3/4" plywood doors.





TOP 5 CHANGES WE WOULD MAKE

Now that we've been living in Vanolin for over 3 years, there are a few things we would definitely do differently if we had the chance!

Here's the top 5.

5. Insulated window covers & cab curtain

In below-freezing temps, the cab area leaks so much cold air into the living area. At only \$40 each, our reflective window covers work well in summer and for privacy, but don't help much in the winter. The windows even ice over from interior condensation.

Insulated window covers are spendy but would be worth it. An additional measure would be to install an insulated curtain behind the seats to completely seal off the cab.

Overland Gear Guy sells a bunch of great window covers insulated with Havelock Wool and other useful van accessories (not sponsored or affiliated).

4. Larger overhead cabinets

Since we have to store all of our videography gear beneath our bench seat, we have a lack of dry food storage. We really only have 1 little overhead cabinet dedicated as pantry space!

Because of this, we wish we made our overhead cabinets larger.

We would increase the size of the cabinet over our kitchen to be 1" taller, 1" deeper, and 2-4" longer.

We would increase the size of the cabinet over our bench seat to be 4" taller.



3. Adding an Air Conditioner

Summer of 2020 was HOT. And due to the pandemic, we couldn't just sit inside air conditioned buildings all day (like libraries or coffee shops). We were stuck in the van, trying to stay cool by finding shade or driving to high elevation areas. Even while staying in the high mountains of Colorado all the way north to the Canadian Border, we were sweating all summer long.

The decision to add an air conditioning unit is difficult. A rooftop unit takes away valuable solar space that you would need to be able to run the AC. There are some under-mounted units, or even some that mount into the rear doors. We aren't well-versed in van air conditioners so we won't recommend any here, but definitely consider adding one to your van build. We wish we did.

2. Different foam cushion & mattress thickness

We highly recommend ordering custom foam from [Foam Factory](#).

This is where we got our bench seat cushions and mattress.

However, we ordered all the WRONG thicknesses (our mistake!).

Here's what we wish we would have ordered.

Our mattress is HD36-HQ foam and 6" thick. It's too stiff, and we even like a hard mattress. We'd go with a less dense foam and maybe 5" if we did it again. The bench seat cushion is 2" of HD36 foam, and it's far too soft. We upgraded to 4" of Lux foam. The back cushion is 2" Super Soft Foam, and of course it's too soft. We'd recommend 2-3" of HD36 foam.

1. Metal shower pan

Our plastic RV shower pan CRACKED in 3 places. This was because of the pressure points created by the feet of the wooden shower mat that we added on top of it. We love the wooden shower mat as it solves many problems, so we modified it with more feet and placed the feet further from the edge of the shower pan. We had to patch the 3 holes in our shower pan with JB WaterWeld.

We've seen other vanlifers fabricate metal shower pans, and now we wish we went that route. It's more difficult, time consuming, and expensive, but the benefits of a metal shower pan are:

- It won't ever break or leak
- You can make it a fully custom size
- You can put the drain hole in an ideal spot
(to avoid hitting the support beam under the van)

While we're on the topic of showers & water, we'd also recommend using marine grade plywood in your subfloor, and/or sealing your entire subfloor with a waterproof sealant or paint. You never know where water may intrude or leak throughout the lifetime of your van, and once you build everything on top of your floor, there's no going back to fix it!



HAPPY VAN BUILDING!
- CONNOR & ALIX

